

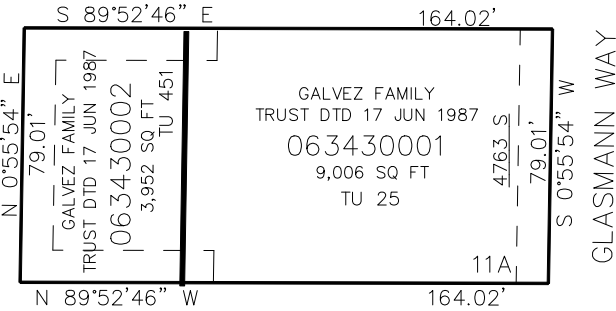
PART OF THE SE. 1/4, OF SECTION 9, T.5N., R.1W., S.L.B. & M.
ROLLING OAKS SUBDIVISION NO. 1 FIRST AMENDMENT

TAXING UNIT: 25, 451

IN OGDEN CITY
SCALE 1" = 30'

SEE PAGE 198

SEE PAGE 198



SEE PAGE 198

SEE PAGE 198

10' UTILITY & DRAINAGE EASEMENTS EACH
SIDE OF PROPERTY LINES AS INDICATED
BY DASHED LINES EXCEPT AS OTHERWISE
SHOWN.

FOR COMPLETE ENC DATA SEE
ORIGINAL DEDICATION PLAT IN
BOOK 91, PAGE 03 OF RECORDS.